

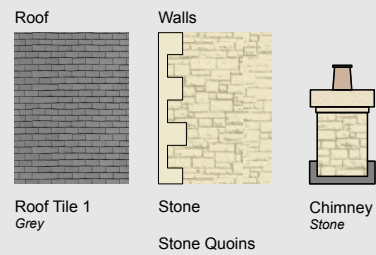
All Exact Products TBC  
Please refer to elevation drawings to see individual plot variations

## Treatment Type A

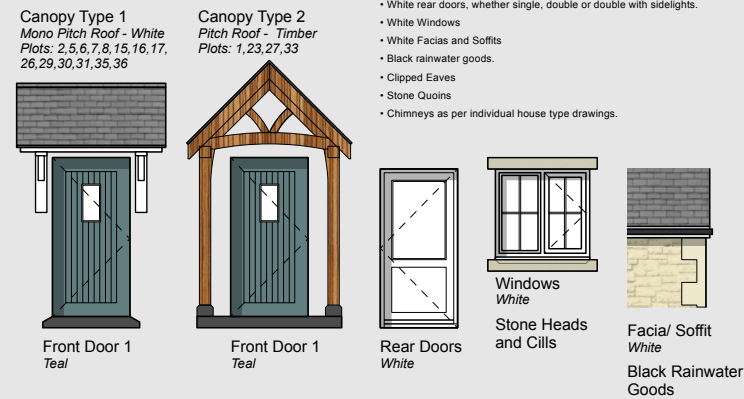
Plots: 1,2,5,6,7,8,15,16,17,23,26,27,29,30,31,33,35,36



### Materials



### Elevational Elements



**Treatment Type A** - Always use the following elevational elements and treatments, as shown below:

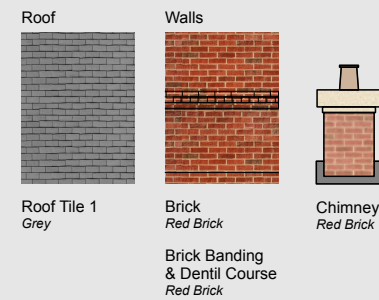
- Canopy Type 1 or Canopy Type 2 and Front Door Type 1 (Please refer to elevation drawings for exact porch spec).
- White rear doors, whether single, double or double with sidelights.
- White Windows
- White Facias and Soffits
- Black rainwater goods.
- Clipped Eaves
- Stone Quoins
- Chimneys as per individual house type drawings.

## Treatment Type B

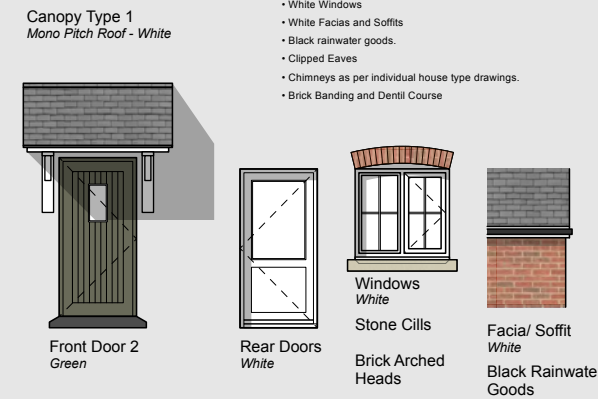
Plots: 3,4,11,12,13,14,19,20,21,22,37,38,42,43,46,48



### Materials



### Elevational Elements



**Treatment Type B** - Always use the following elevational elements and treatments, as shown below:

- Canopy Type 1 and Front Door Type 2.
- White rear doors, whether single, double or double with sidelights.
- White Windows
- White Facias and Soffits
- Black rainwater goods.
- Clipped Eaves
- Chimneys as per individual house type drawings.
- Brick Banding and Dentil Course

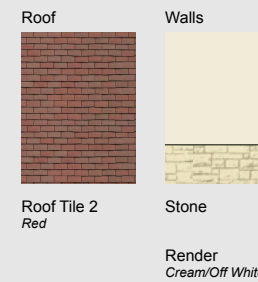
## Treatment Type C

Plots: 9,10,18,24,25,28,32,34,39,40,41,44,45,47

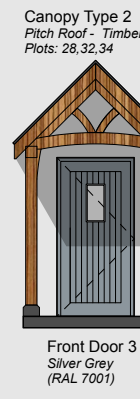
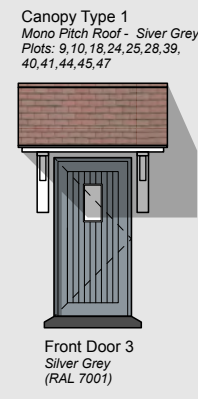


Plots: 28,44,45

### Materials

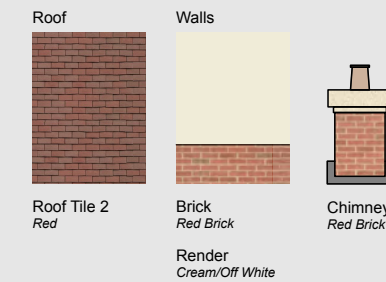


### Elevational Elements



Plots: 9,10,18,24,25,32,34,39,40,41,47

### Materials



### Elevational Elements

**Treatment Type C** - Always use the following elevational elements and treatments, as shown below:

- Canopy Type 1 or Canopy Type 2 and Front Door Type 3 (Please refer to elevation drawings for exact porch spec).
- White rear doors, whether single, double or double with sidelights.
- White Windows
- White Facias and Soffits
- Black rainwater goods.
- Clipped Eaves
- Chimneys as per individual house type drawings.

### NOTES

This drawing is the copyright of Quattro Design Architects Ltd and should not be reproduced in whole or in part without written permission. Only figured dimensions to be used for construction. Check all dimensions on site. Any discrepancies are to be reported to the Architect as soon as possible.

### REVISIONS

REV: DATE - DRAWN - CHECKED: NOTES  
- 16.04.24 - LM - RJF:  
Drawing created.

### DRAWING TITLE

Proposed Elevational Treatment Types

### PROJECT

St Margarets Drive, Alderton

### CLIENT

MF Freeman

SCALE 1:100@A4

DATE April 2024

DRAWING NO. REV

7233-F-1004 -

